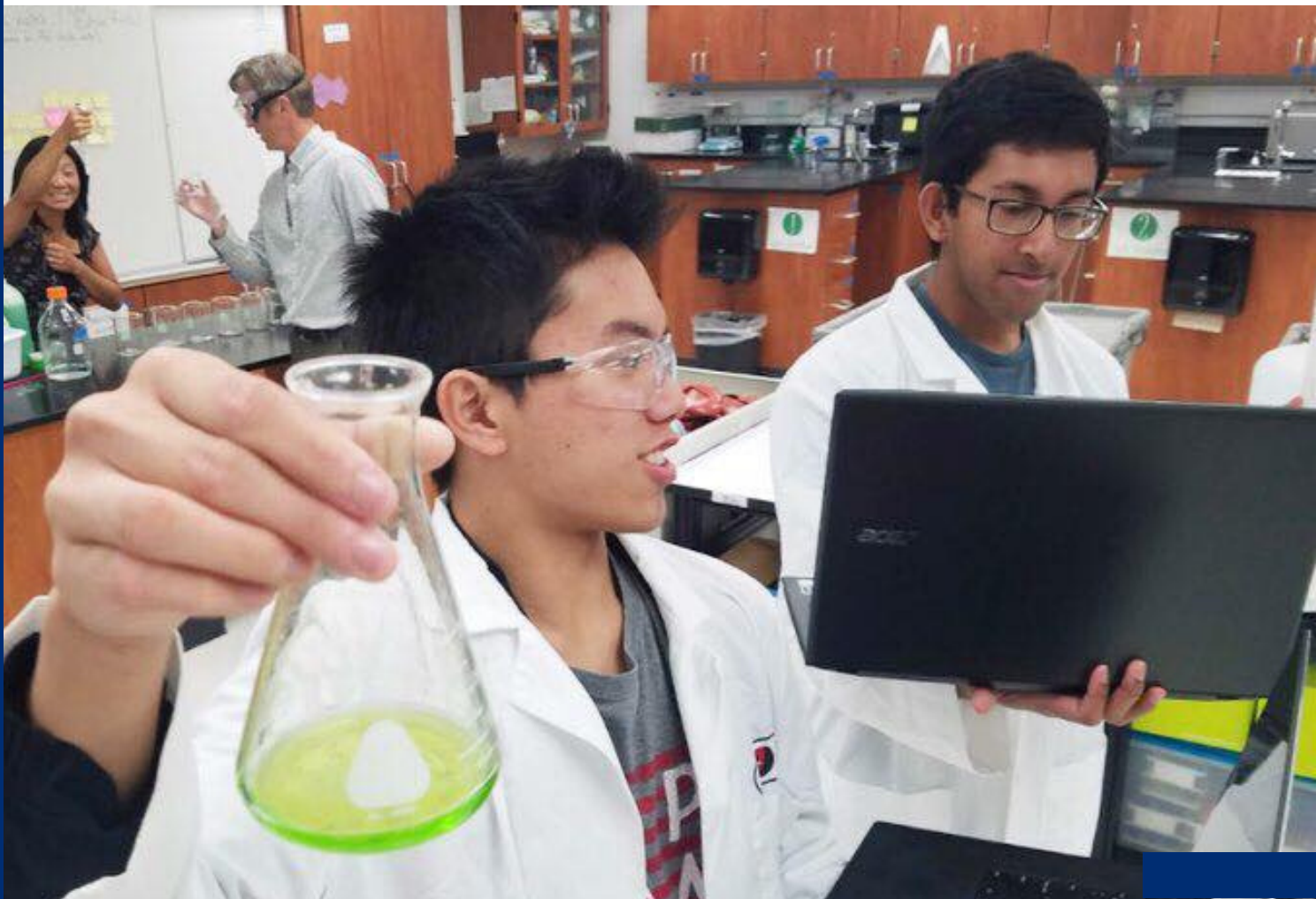




2021-2022 In-Person Learning & Safety Plan

Please note- the information in this plan can change frequently, will be updated as quickly as possible, and will take time to update after guidelines with the state change. This plan is NOT exhaustive.

Updated 3/15/22





what's inside

- 03** Signage, Supplies, & Protective Equipment
 - 04** Masks & Visitors
 - 05** Mask Wearing
-

- 06** Approved Types of Masks
 - 07** Buses
 - 08** Screening, Arrival At School & Recess
-

- 09** Daily Screenings
 - 10** Daily Screenings- Questions
 - 11** Facility Ventilation, Cleaning & Disinfecting
-

- 12** Handwashing, Restrooms & Social Distancing
 - 13** COVID-19 Mitigation, Positive Test & Contact
 - 14** COVID-19 Student Symptom Decision Tree
-

- 16** COVID-19 Staff Isolation & Quarantine Guidance

- 19** In-Person Learning and Schedules
-

- 19** Independent Study

- 19** PE, Performing Arts & Field Trips

- 20** Athletics
-

- 21** Food & Nutrition Services

- 22** Special Education & Social Emotional

- 23** How VUSD Communicates With You





Health & Safety Protocols

Signage, Supplies, & Protective Equipment

The health and safety of our students, staff, and families are of paramount importance. This document is intended to provide you with information on current guidance from public health officials and state agencies. This plan will be updated as we strive to continually implement current best practices and guidelines.

SIGNAGE, SUPPLIES, & PERSONAL PROTECTIVE EQUIPMENT (PPE)

The following items have been set up at each school site:

- Plexiglass partitions for protections where social distancing cannot be maintained, such as the office front desks

The following items have been sent to schools based upon student enrollment and staff numbers:

- For employees: A selection, as available, of masks and face shields, will be provided. Plexiglass partitions are also available for teacher desks if requested.
- For students: Masks will be provided on an “as needed” basis with the preference that parents provide a mask that best suits their child and follows guidelines (see pg. 6)
- Schools have been provided:
 - Hand washing supplies
 - Hand sanitizer (hand sanitizer will be fragrance-free and contain at least 60% ethyl alcohol)
 - Cleaning & disinfecting supplies in every room
 - Masks as needed; however, we ask that students bring their own

Masks & Visitors

MASKS & PERSONAL PROTECTIVE EQUIPMENT

Following the California Department of Public Health's (CDPH) guidance, masks are now strongly recommended for students and staff while indoors at all VUSD school sites regardless of vaccine status. See pg. 6 for more information on recommended face masks. Students and staff who choose to wear a mask should do so over the mouth and nose.

Masks will be required in the health offices, CARE areas, and COVID Testing locations.

PARENTS, GUARDIANS & VISITORS

Nonessential visitors, including parents, guardians, and volunteers, will be limited in numbers on campus unless otherwise communicated by the site. Students may be dropped off at designated locations outside the school or at a car drop-off location. If students do not have a mask and would like one, a disposable mask will be provided. All visitors and volunteers who are permitted on campus must follow all prevention protocols.

If families have school business to conduct, they are welcome to go to the school's front office.

How Can I Help My Student Adapt To Wearing a Mask?

1

EXPLAIN WHY

- Provide clear and simple information using positive phrasing
 - Masks help us from spreading germs to others
 - Caring for others in our school is one way of showing kindness

2

PROVIDE BACKGROUND

- You and your classmates will wear a mask when you are inside at school
- Students riding the bus will wear masks to help them not spread any germs

3

PRACTICE

- Break down the steps of putting on a mask:
 - Wash hands
 - Hold the mask by the ear loops/ties
 - Place the mask against your face
 - Secure the ear loops/ties
 - Keep the mask on until your are outside or an adult says you can take it off
 - Do not touch or play with anyone else's mask
 - Do not share masks with anyone
 - Take the mask off by ear loop/ties
 - Keep the mask in a clean spot (on a desk or in a labeled bag)
- Practice the steps above for 5-10 minutes each day, increasing each day until they get used to having it on for a couple of hours.
- Give positive reinforcement
- Model mask wearing for your student

4

PRACTICE TAKING OFF THE MASK PROPERLY

- Carefully untie the mask or stretch the ear loops
- Handle only by the ear loops and the ties
- Avoid touching eyes, nose, and mouth as you take it off and wash hands after taking off

What type of masks are recommended?

- ✓ It is strongly recommended that all VUSD students and staff wear a mask indoors if they are over the age of 2 years.
- ✓ Students and staff who choose to wear a mask should choose one with two or more layers of breathable, washable fabric or a disposable surgical face mask
- ✓ All families are encouraged to send their child with a backup mask in the event one gets dirty.
- ✓ Students will be provided a disposable mask if they do not come to school with a mask and would like one.
- ✓ If you choose to wear a mask, they must cover the mouth and nose and fit snugly against the side of your face, and should not have gaps.



Non-Recommended Masks

Mesh Masks

- ✗ Do not meet the threshold of a tightly woven fabric that cover the nose and mouth

Bandanas

- ✗ Bandanas do not sufficiently prevent the spread of respiratory droplets.

Gaiters



Face Shields Only



Masks with External Valves



- Valves release exhaled droplets and don't protect others.

BUSES

Buses may be available for students depending on availability and legal requirements. The following guidelines are being enforced to maximize the safety of all students and staff on the bus.

- It is strongly recommended that masks be worn while on the bus. Bus drivers will have extra masks should a child forget their mask and wants one.
- If a student arrives at the bus stop with COVID-19 like symptoms and does not have an adult with them to take them back home, we will distance that child on the bus and then take them to school. Upon arrival at the school, they will be escorted to the front office for check-in to the CARE Area, and the parent/guardian will be notified for pick-up.
- All parents are required to screen their children each morning before sending them to the bus stop. See pg. 10 for the checklist. If a child has any COVID symptoms, they should not be sent to the bus stop or school.
- Windows will be open on the bus to allow for additional air circulation. We ask that each child bring a sweatshirt/sweater/jacket in case they get cold on the bus.
- Buses will be cleaned once per day.
- Children may sit up to three persons per seat, if necessary.
- Special Education transportation is required by law and will be the priority.
- Per the California Highway Patrol, we are unable to provide hand sanitizer on the bus because it is a flammable liquid.



SCREENING AT HOME

- Families are required to take temperatures daily and monitor children for symptoms before going to school.
- Staff members are required to complete a wellness check prior to beginning work. If staff is experiencing symptoms, they should stay home.
- Utilize ParentSquare or the daily wellness checklist on pg. 10.

OTHER SAFETY CONSIDERATIONS

- School sites will follow guidelines developed by the California Department of Public Health (CDPH) for cleaning, disinfection, and ventilation of school campuses.
- Common touch surfaces will be cleaned regularly (i.e., countertops, door handles, restrooms, student desks, student chairs).
- Staff and students will be expected to wash/sanitize their hands regularly.
- Schools may have to limit sharing of supplies between students depending on current guidelines.

ARRIVAL AT SCHOOL

- Signage will be posted throughout school campuses to remind students and staff that mask-wearing is strongly recommended indoors and to wash hands.

NUTRITION/RECESS/PASSING PERIODS

- All schools are going to a regular bell schedule, with a scheduled recess and lunch.
- Students are asked to keep all unnecessary items at home.
- Playgrounds will be open for use (monkey bars, etc.).
- Signage will remind students to wash hands before and after recess.
- Go to <https://www.venturausd.org/edserv/EducationalServices/BellSchedules.aspx> to view the bell schedule for each school site.



Daily Screenings

VUSD will be utilizing passive screening of staff and students. This means that screening will occur at home before coming to school through ParentSquare. If you are unable to use ParentSquare, then please check the form on the next page. If your child answers yes to either question, they must remain home and you must contact the school's office and if your student is an athlete you should also contact the coach.

School sites will not be taking temperatures of students when they arrive at the school site. While not required by VCPH, we will return to temperature screening of students and staff upon arrival if we begin to see significant COVID-19 spread on the elementary schools' campuses. If the District determines this is necessary, the Principal will communicate to families.

If a student arrives at school with an elevated temperature, the following will occur:

- If the student's temperature is just slightly elevated and no other COVID symptoms are present, the student will be asked to wait and have their temperature taken again in a few minutes (sometimes if a student has a coat on, has walked to school, etc. their temperature may be slightly elevated).
- If a parent/guardian is still present, and the student's temperature is still elevated to 100.4 or more, they will be sent home with the parent/guardian.
- If the temperature is still elevated and a parent/guardian is not present, the student will be sent to health services (on-site) for evaluation. The child must wear a mask in the health office or CARE Area.
- The student's condition will be documented on-site by health services.
- If the student's temperature remains elevated, and/or the student has possible COVID symptoms the student will be sent to an alternative health site (CARE Area) established on campus until the parent/guardian can pick up the student.
- Information will be given to the parent/guardian about requirements for returning.

Daily Screenings- Questions

VUSD will be utilizing passive screening of staff and students. This means that screening will occur at home before coming to school through ParentSquare for all grade levels. If you are unable to use ParentSquare, then please use this form as a reference (no need to turn the paper form in).

In the last 14 days, has your child or anyone in your household had close contact with someone who has or is suspected of having COVID-19?

_____ Yes

_____ No

In the last 48 hours, has your child experienced any of the following symptoms:

Fever (any temperature at or above 100.4 degrees Fahrenheit)

Congestion/runny nose

Headache

Cough

Sore throat

Difficulty breathing

Fatigue/muscle or body aches

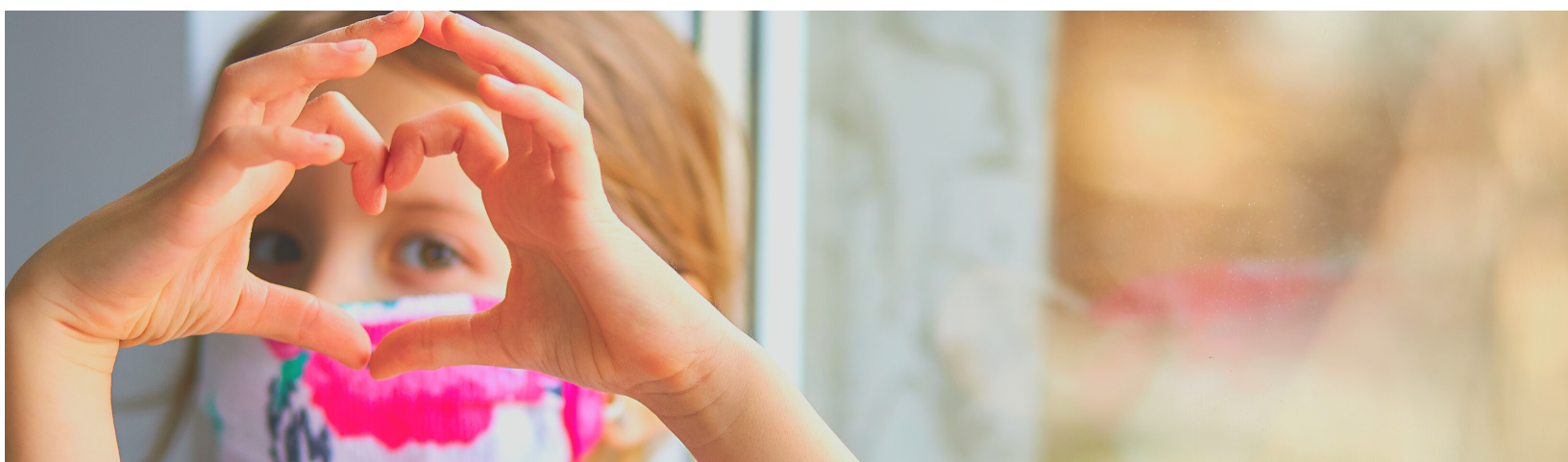
Loss of taste or smell

Gastrointestinal symptoms (nausea, vomiting or diarrhea)

_____ Yes

_____ No

If you answered yes to any of the above questions, please do not send your child to school and call the front office for further instructions.



Facility Ventilation, Cleaning & Disinfecting

INDOOR AIR QUALITY

Indoor air quality is essential to providing a safe and comfortable teaching and learning environment for students and staff. Measures to improve indoor air quality include:

- Air dilution will be increased by keeping windows and doors open, and HVAC fresh air intake maximized to the extent that occupant health considerations are not negatively impacted.
- All ventilation systems are currently being inspected and tested by a licensed HVAC contractor, including thermostats, filters, and overall mechanical systems.
- Air filters are being used at all locations with the proper factory-rated filter for each HVAC unit where the HVAC equipment specifications and operating capacities allow. They are being changed four times a year.
- Systems are being scheduled to run more than normal to allow for more air exchange per day.
- All air systems are running 12 hours a day to ensure ventilation in all rooms. Automatic timers are being used to make sure that the systems are running and thermostats are being set.
- All ventilation systems for elementary standard classrooms have individual air condition and/or heating systems. These systems are self-contained and not shared with other spaces.

FACILITY CLEANING PROTOCOLS

The safety of students and staff at Ventura Unified School District is our top priority. Cleaning logs have been set up in each room and signed after each cleaning. The steps outlined below will also be followed:

- High-touch classroom surfaces will be cleaned nightly, such as desks, door handles, light switches, etc.
- Non-classroom high touch surfaces will be cleaned nightly and throughout the day as practical, including:
 - bathrooms
 - kitchens
 - teacher lounges
 - hydration stations (where students can fill up water bottles- usually in the cafeteria)
- When needed, a disinfectant with an EPA registration number that is approved as effective against the COVID-19 virus will be applied in accordance with the manufacturer's instruction, allowing for the appropriate contact time.
- "Foggers" may be used as an extra step in the cleaning process.



All information contained in this document is subject to change per local, state and federal guidelines.



Handwashing

Handwashing is strongly encouraged as one of the most effective ways to prevent the spread of any biological pathogen, including COVID-19:

- All persons will be encouraged to wash their hands or to use hand sanitizer before arrival.
- A sink and/or hand sanitizer will be available in each classroom
- Students will be instructed by teachers and support staff daily and through posted signage to wash their hands.
- Staff will teach and remind students to sneeze and cough into a cloth or tissue or, if not available, into one's elbow and to wash their hands or use sanitizer immediately after.
- Students will be encouraged to wash their hands before and after playing outside and/or eating.
- Students will be reminded to wash hands before and after using the restroom.

Restrooms

Restrooms will be open and available.

- All persons will be encouraged to wash their hands or to use hand sanitizer after use.
- Soap and water are available in all restrooms, which are stocked daily, along with paper towels.
- Bathrooms are considered a high-touch area and will be cleaned nightly and throughout the day as practical.

Social Distancing

Social distancing is not currently required by Ventura County Public Health in our classrooms, however, we are asking all staff to enforce the 3' rule while in class as much as possible. We are also encouraging school sites to maximize space between students when outdoors especially when eating.

COVID-19 Mitigation, Positive Cases & Close Contact

STUDENTS WHO TEST POSITIVE OR IS A CLOSE CONTACT

If a student tests positive or is a close contact of someone who tests positive, he/she should contact the school's front office and ask for the Health Services department to report. If the student is also an athlete, they should also notify their head coach. See page 15 for how the decision on quarantine will be made for both those that test positive for COVID-19 and those who are deemed close contacts.

PLAN FOR HANDLING SICK PERSONS

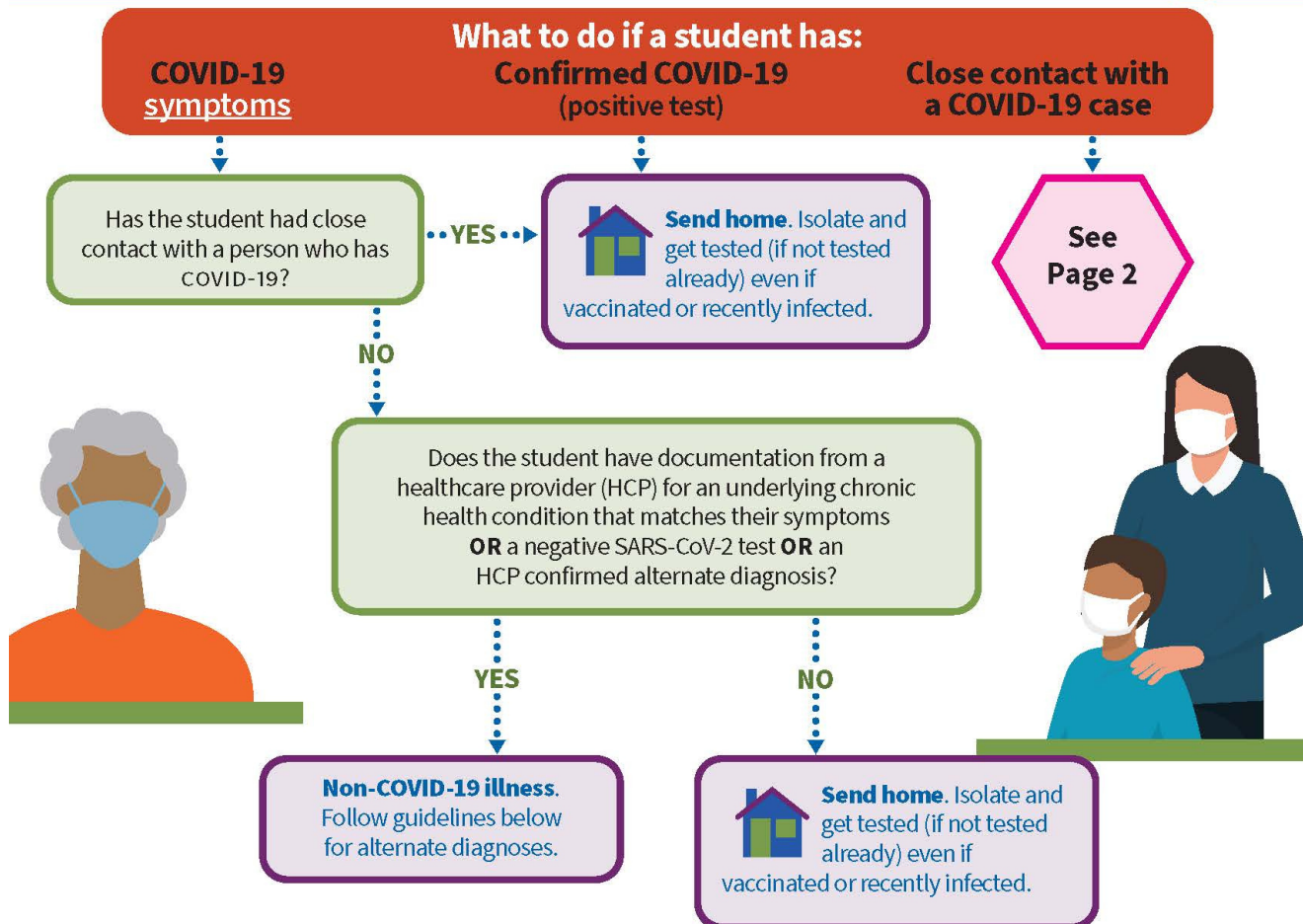
- At each school, a CARE Area (COVID Appraisal, Response, & Evaluation Room) will be equipped with appropriate personal protective equipment (PPE). All sick persons with potential COVID-19 symptoms will be evaluated in this room.
- Students and staff that present to the school health staff with a fever of 100.4 Fahrenheit or above, a cough and/or shortness of breath, and/or gastrointestinal illness will be considered a suspect COVID-19 case and referred for testing. If staff/student tests, they should not return to the school before they have results.
- For those students that do not have a usual source of health care, the school health staff will coordinate with the Ventura County Public Health (VCPH) to arrange for same-day testing.
- Only a small percentage of students and staff who have COVID-19 infection will fit the above description. School nurses and health technicians will identify any additional suspect cases to refer for testing.

CONSIDERATION FOR PARTIAL OR TOTAL CLOSURE

- **Under what circumstances should temporary school closure be considered due to excessive COVID-19 cases?**
 - Per the CDPH, California is committed to preserving the safety and success of in-person instruction at K-12 schools. A temporary school closure due to COVID-19 should be a last resort and considered only after all available resources have been exhausted in an attempt to preserve in-person education. Temporary school closures should be considered only after conferring with the VCPH COVID-19 School Outbreak Team and with the Public Health Officer. There is no specific case threshold at which the State recommends an immediate temporary closure of a classroom or school.
- **How do schools determine when to shut down a classroom due to multiple positive COVID-19 cases?**
 - Schools should consult with VCPH about any concerns they have with multiple COVID-19 cases in a classroom. Note that infections diagnosed in students and school staff are not necessarily the result of exposure at school, and COVID-19 transmission remains much more likely to occur among people living in the same household or participating in other non-school activities. Testing is strongly encouraged to assess the extent of cases among students and school staff. Schools may choose to close a classroom any time they feel it would be best to do so without authorization from VCPH; however, classroom closure should be the last resort. School liaisons are encouraged to contact the VCPH COVID-19 School Outbreak Team for outbreak guidance and consultation. Parents and students may be assured that any COVID-19 positive student or teacher will be sent home for isolation.

Student Symptom Decision Tree

Managing confirmed or suspected COVID-19 at K-12 schools



Positive or no test: Stay home for at least 5 days after symptoms start (or after positive test if no symptoms). Isolation can end after day 5 **IF** fever-free with no (or resolving) symptoms **AND** a test (antigen preferred) on day 5 or later is negative. If no test or a positive test on day 5 or later, or symptoms not resolving, isolate through day 10, continuing until fever-free.

Negative test or alternate diagnosis (with no previous positive test): May return to in-person instruction if fever-free (no fever for previous 24 hours, without using fever-reducing medication) **AND** other symptoms improving.

*For more detailed information and guidelines, see [CDPH Schools Guidance](#) and [CDPH Isolation & Quarantine Guidance](#).

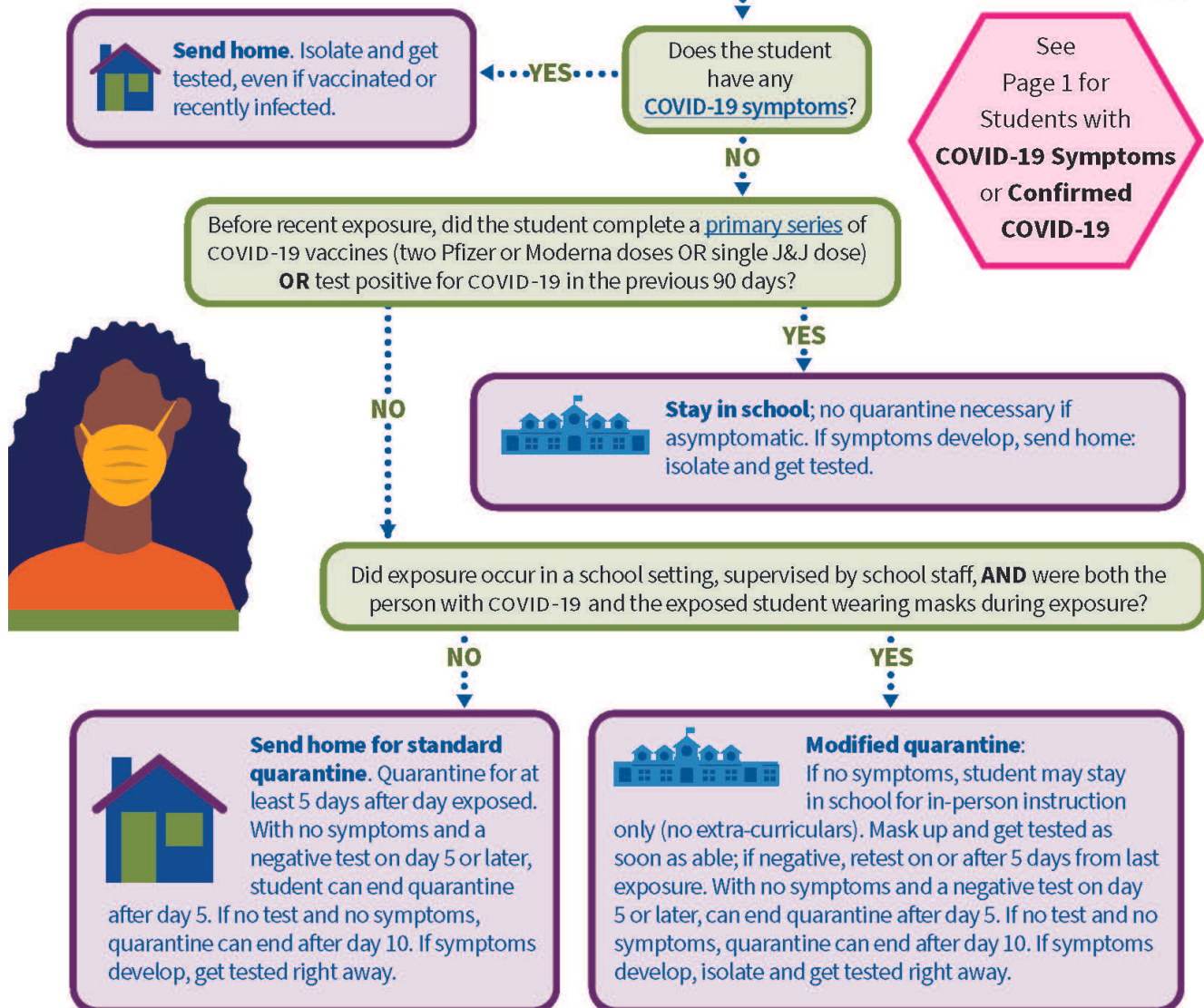
Staff and employers are subject to Cal/OSHA [COVID-19 ETS](#) or [Aerosol Transmissible Diseases](#) standard and should review those requirements.



Student Symptom Decision Tree

Managing COVID-19 exposure at K-12 schools

What to do if a student is a **close contact** of someone with COVID-19 if using Individual Tracing*



Positive test: Stay home for at least 5 days after symptoms start (or after the day student tested positive if no symptoms). See page 1 for more on isolating after a positive test.

*This page addresses students identified as close contacts, following an Individual Tracing approach to managing COVID-19 exposures. When schools follow a Group-Tracing approach, all exposed students may receive an exposure notification (EN) and should get tested within 3-5 days after exposure, earlier if symptoms develop. Asymptomatic students may remain in school if participating in testing. Students who develop COVID-19 symptoms or test positive after receiving an EN should isolate at home and notify school of test results. See CDPH's [Group-Tracing Approach](#) and K-12 [Schools Q&A](#) for more information on student exposures.

Tables with updated Isolation and Quarantine Guidance from Cal/OSHA



Tables with updated Isolation and Quarantine Guidance from Cal/OSHA

Table 1: Exclusion Requirements for Employees Who Test Positive for COVID-19 (Isolation)

<p>Requirements apply to all employees, regardless of vaccination status, previous infection, or lack of symptoms.</p>	<ul style="list-style-type: none"> • Employees who test positive for COVID-19 must be excluded from the workplace for at least 5 days. • Isolation can end and employees may return to the workplace after day 5 if symptoms are not present or are resolving, and a diagnostic specimen* collected on day 5 or later tests negative. • If an employee is unable or chooses not to test[†] and their symptoms are not present or are resolving, isolation can end and the employee may return to the workplace after day 10. • If an employee has a fever[‡], isolation must continue and the employee may not return to work until the fever resolves[‡]. • If an employee's symptoms other than fever are not resolving, they may not return to work until their symptoms are resolving or until after day 10 from the positive test. • Employees must wear face coverings around others for a total of 10 days after the positive test, especially in indoor settings. Please refer to the section in this FAQ on face coverings for additional face covering requirements. <p>[†] Antigen test preferred.</p>
--	---

**Table 1 applies to students and staff per CDPH*

Tables with updated Isolation and Quarantine Guidance from Cal/OSHA Cont.



Table 2: Employees Who Are Exposed to Someone with COVID-19 (Quarantine)

<p>Requirements apply to employees who are:</p> <ul style="list-style-type: none"> ○ Unvaccinated; OR ○ Vaccinated and booster-eligible[†] but have not yet received their booster dose.^{††} <p>[†] Refer to CDC COVID-19 Booster Shots to determine who is booster eligible.</p>	<ul style="list-style-type: none"> ○ Employees must be excluded from the workplace for at least 5 days after their last close contact with a person who has COVID-19. ○ Exposed employees must test on day 5. ○ Quarantine can end and exposed employees may return to the workplace after day 5 if symptoms are not present and a diagnostic specimen[*] collected on day 5 or later tests negative. ○ If an employee is unable or chooses not to test[†] and does not have symptoms, quarantine can end and the employee may return to the workplace after day 10. ○ Employees must wear face coverings around others for a total of 10 days after exposure, especially in indoor settings. Please refer to the section in this FAQ on face coverings for additional face covering requirements. ○ If an exposed employee tests positive for COVID-19, they must follow the isolation requirements above in Table 1. ○ If an exposed employee develops symptoms, they must be excluded pending the results of a test. ○ Employees are strongly encouraged to get vaccinated or boosted.
--	--

^{††} Employers are not required to exclude asymptomatic employees in this category if:

- A negative diagnostic test^{*} is obtained within 3-5 days after last exposure to a case;
- Employee wears a face covering around others for a total of 10 days (please refer to the section in this FAQ on [face coverings](#) for additional face covering requirements); and
- Employee continues to have no symptoms.

Tables with updated Isolation and Quarantine Guidance from Cal/OSHA Cont.



Per Cal/OSHA, there is an exception for employee who meet the criteria for table #2 and have had COVID-19, returned to work after the end of the required exclusion period, and have had no symptoms since returning—but that exception lasts only 90 days after the employee's original onset of symptoms or, if the recovered COVID-19 case never developed symptoms, 90 days following the first positive test.

Table 3: Employees Who Are Exposed to Someone with COVID-19 (No Quarantine Required)

<p>Requirements apply to employees who are:</p> <ul style="list-style-type: none"> ◦ Boosted; OR ◦ Vaccinated, but not yet booster-eligible. * <p>* Refer to CDC COVID-19 Booster Shots to determine who is booster eligible.</p>	<p>Employees do not need to quarantine if they:</p> <ul style="list-style-type: none"> ◦ Test on day 5 with a negative result. ◦ Wear face coverings around others for 10 days after exposure, especially in indoor settings. Please refer to the section in this FAQ on face coverings for additional face covering requirements. ◦ If employees test positive, they must follow isolation recommendations above. ◦ If employees develop symptoms, they must be excluded pending the results of a test.
---	---

In-Person Learning & Schedules

All students will be automatically enrolled in in-person learning for the 2021-2022 school year. These schedules can be found online at <https://www.venturausd.org/edserv/EducationalServices/BellSchedules.aspx>. If students are quarantined they should contact the school's front office for instructions.

Independent Study (IS)

VUSD is pleased to offer Independent Study (IS) Options for all grade levels:

- Elementary & Middle School - Homestead Independent Study- For more please reach out to the Principal at susan.martinez@venturausd.org
- Middle School & High School - FLEX (Four or more classes taken online in Edgenuity Online Courseware)-For more information please reach out to your 2021-22 middle/high school counselor
- High School - El Camino High School at Ventura College- For more information please reach out to tera.shrum@venturausd.org

Distance Learning or “Concurrent Teaching” (live-streamed class Zooms) that occurred last spring will not be offered in 2021-22.

For families of students receiving the services of Special Education please see page 20 for additional information.

PE & School-Based Extracurricular Activities

- Physical Education (PE)
 - Dressing Out - Students will be required to dress out for PE in locker rooms in the same manner during pre-COVID.
 - Masks - Masks will not be required for outdoor PE activities; masks will be strongly recommended for indoor (e.g., gym) PE activities
 - PE Activities - All PE courses can return to typical pre-COVID activities/use of equipment
- School-Based Extracurricular Activities
 - The requirements and recommendations in this guidance apply to all extracurricular activities that are operated or supervised by schools, and all activities that occur on a school site, whether or not they occur during school hours, including, but not limited to, sports, band, chorus, and clubs.
 - Masks are strongly recommended indoors at all times for teachers, referees, officials, coaches, & spectators.
 - Masks are strongly recommended indoors at all times when participants are not actively practicing, conditioning, competing, or performing. Masks are also strongly recommended indoors while on the sidelines, in team meetings, and within locker rooms and weight rooms.
 - When actively practicing, conditioning, performing, or competing indoors, masks are strongly recommended by participants even during heavy exertion, as practicable. Individuals using instruments indoors that cannot be played with a mask (e.g., wind instruments) are strongly recommended to use bell coverings and maintain a minimum of 3 feet of physical distancing between participants. If masks are not worn (or bell covers are not used) due to heavy exertion, it is strongly recommended that individuals undergo screening testing at least once weekly, unless they had COVID-19 in the past 90 days. An FDA-authorized antigen test, PCR test, or pooled PCR test is acceptable for the evaluation of an individual's COVID-19 status.

Athletics

VUSD is planning for a full return to pre-COVID athletics for the 2021-2022 school year at all levels and eligibility for participation in athletics will be determined the same way it was pre-COVID.

- For high school CIF athletics, traditional pre-COVID CIF athletics eligibility requirements apply:
 - All student-athletes must have a 2.0 GPA as determined by the last quarterly marking period
 - For Fall sports season, eligibility will be determined using semester 2 grades from the 2020-21 school year
 - All student-athletes must ALSO be passing (letter grade of D or higher) a minimum of four classes
 - Eligibility is determined quarterly (both 2.0 GPA and passing 4 classes rules apply) throughout the school year
 - CIF / VUSD allows one-quarter of a GPA (below of 2.0) “Probationary Period” during a student’s high school tenure
 - There is no probationary period for not passing a minimum of four classes

Indoor Athletic Events

Spectators: Currently, we can be at full capacity and masks are strongly recommended at all times (per VCPH).

Coaches and players: It is strongly recommended that masks be worn indoors as tolerated.

Outdoor Athletic Events

Spectators: Currently, we can be at full capacity and masks are strongly recommended.

Testing of Athletes

Athletes participating in indoor sports are strongly recommended to test weekly.

All Athletic Events

- Visitor locker room access will be available for changing/halftime and masks are strongly recommended.
- Bus transportation to athletic events: We can be at full capacity and masks are strongly recommended.

If you have general questions about high school CIF athletics please contact your school’s Athletic Director

- Buena - Shaun Stropole; shaun.stropole@venturausd.org
- Foothill Tech - Jamaal Brown; jamaal.brown@venturausd.org
- Ventura - Dave Hess; david.hess@venturuasd.org

For all elementary and middle school athletics inquiries, please contact your school’s principal for more information on offerings.



Food & Nutrition Services

Meal Distribution

The USDA has extended a waiver that allows our District to offer meals at NO CHARGE for all students ages 18 and under. All students may receive one breakfast and one lunch each school day for free if they choose. They may also bring their own snack/lunch.

STUDENTS WHO ARE IN PERSON

We have prepared menus that are more like the pre-covid offerings. Please visit the District website, <https://ventura.healtheliving.net/> to obtain menu and nutritional information.

STUDENTS IN INDEPENDENT STUDY OR THOSE IN QUARANTINE

Meals will be available for daily pick up for Independent Study students.

If your student is in quarantine, please contact the Food and Nutrition Services office at (805) 641-5000, x 1306, or x1302 to make arrangements.

FOOD STORAGE

Ventura Unified School District is not responsible for food once it has left the District school site. Please be sure to store food properly after pick up.

- Cold meals should be eaten immediately or refrigerated within two hours of receiving the meal. For cold foods like milk, cheese, and meat, refrigerate immediately at 41°F or lower.
- Hot meals should be eaten immediately or refrigerated within two hours of receiving the meal.
- For all hot foods, use the stove, oven, or microwave to reheat foods to a minimum of 165°F or higher before eating.
- Discard all meals left out at room temperature for two hours or more.
- Remember - Always wash your hands for at least 20 seconds with soap and water before eating your meals.

Menus are subject to change.

Special Education

SAFETY CONSIDERATIONS FOR STUDENTS WITH DISABILITIES

- The District is committed to supporting all students in developing the skills necessary to adhere to any mask-wearing or face covering requirements. However, we recognize that some students with special needs may require additional support in this area. VUSD has a multi-tiered and progressive support system in place to ensure that all students can access and participate in their school experience. Please continue to communicate with your school team regularly in order to help ensure this is for your child.

IEP PROCEDURES, RELATED SERVICES & ASSESSMENTS

- The option to participate in IEP meetings both in-person and through a virtual format will be available
- All Special Education Assessment, Specialized Academic Instruction, and Related Services will be provided in school, in-person according to each student's IEP. These will take place during the school day and will follow the safety guidelines as they pertain to the individualized needs of the students.

FOR FAMILIES CONSIDERING INDEPENDENT STUDY

- In order to continue to provide the best educational services to students with additional considerations, each family's IEP team will need to meet to analyze whether or not a District Independent Study or Homestead program will be an appropriate setting for each student on a case by case basis
- Families of students with disabilities who may be considering an Independent Study or Homeschool option should reach out to their Principal and request an IEP meeting to discuss this option.

Social Emotional Supports

SOCIAL EMOTIONAL WELL-BEING

We are committed to supporting the social emotional well-being of the students we serve. The District will be offering the following to our students during the 2021-22 school year:

- Additional Counselors in Elementary Schools & Social Workers
- Social Emotional Learning (SEL)
- Trauma-Informed Practices
- Augmented Behavior Support and Intervention Teams
- Mental Health Resources
- SEL / Mental Health Speaker Series for Students, Staff, and Parents
- Student Assistance Program (SAP) / Wellness Center
- Community Partnerships (Care Solace, Logrando Bienestar, VCBH, etc.)
- Mental Health Committee

MENTAL HEALTH SUPPORTS

The District is committed to providing ongoing mental health support to students through our school psychologists, counselors, Student Assistance Program, and the SAFE Center. More information about these supports is available by visiting <https://www.venturausd.org/Fall2020/MentalHealth.aspx> and <https://sites.google.com/venturaedu.org/vusd-school-counselor/home> and by reaching out to your school counselor.



How VUSD Communicates With You

WEBSITES



Our websites are being updated this year. Websites are our official form of communication for District and school information, news, and announcements. Visit the District website at www.venturausd.org

PARENT PORTAL



Q Parent Connection is an essential tool for all parents. Information related to grades, attendance, homework assignments, library book status, school cafeteria balances, and more can be found at <https://qweb.venturausd.org/parentportal>. If you have difficulty logging in, contact your school's front office.

DISTRICT SOCIAL MEDIA



Official social media pages where good news, fun facts, and emergency updates can be found.
District Facebook-www.facebook.com/Venturausd/
District Twitter- [@SchoolVentura](https://twitter.com/SchoolVentura)
District YouTube-
www.youtube.com/venturaunifiedschoolsdistrict
Contact the front office for school-specific social media accounts.

MASS NOTIFICATION-PARENTSQUARE



School and District parent/guardian and staff communication is delivered via voicemail, text, email, and/or through the mobile app. Be sure you have updated your contact information in Q Parent Connection at <https://qweb.venturausd.org/parentportal>. Download the ParentSquare Mobile App.



SCHOOL SPECIFIC COMMUNICATIONS



Each school and teacher may communicate a bit differently, through flyers, teacher websites, etc. Contact your student's school and teacher for more information.

CANVAS



Teachers may continue to use Canvas to facilitate and/or support their classes. We recommend downloading the Canvas Parent App or you can log into Canvas from a computer.

PEACHJAR



This system (mobile app and email) is a community to VUSD families tool that allows non-profits and businesses to advertise relevant outside programs, events, activities, etc. to our families.